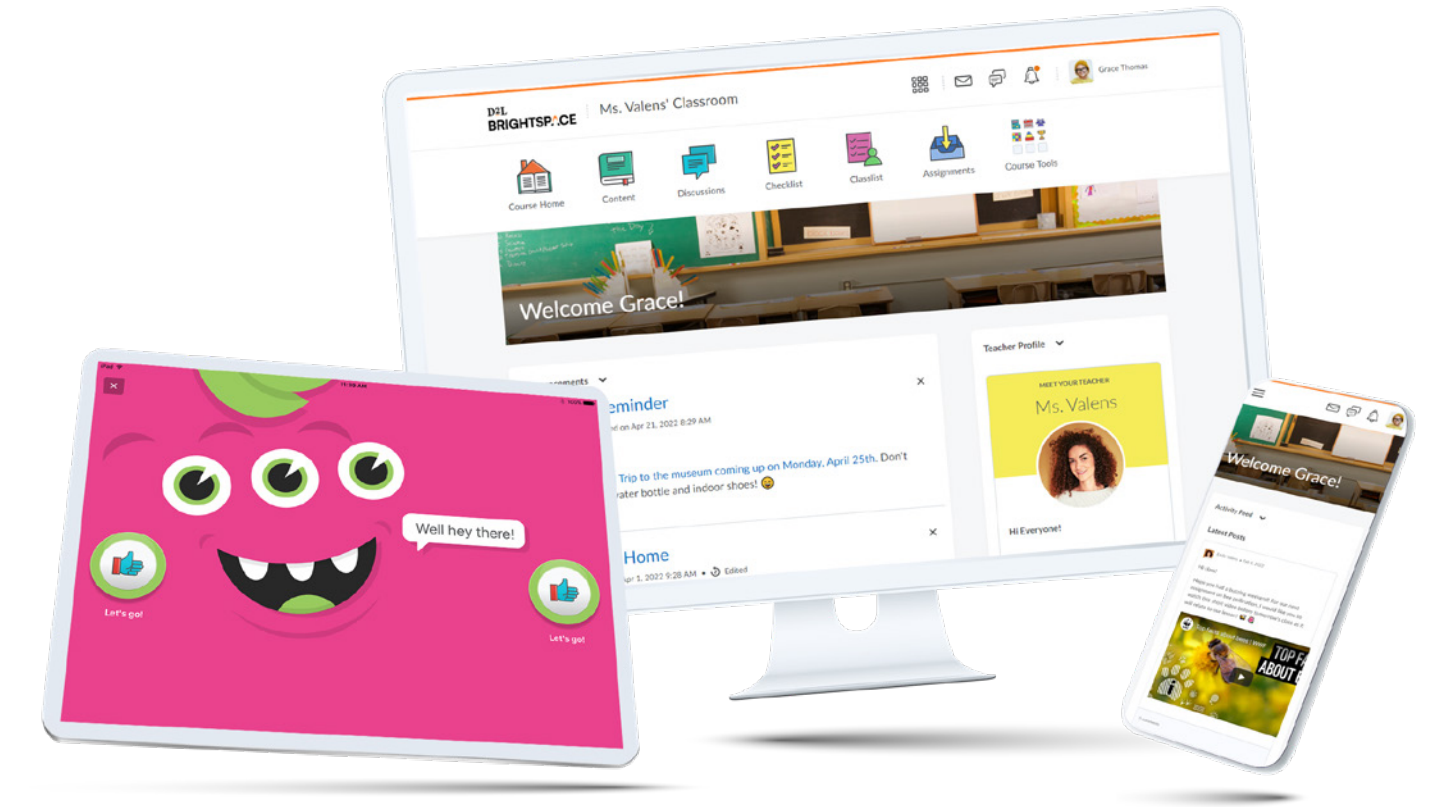


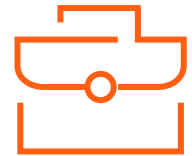





## How D2L Brightspace Supports Teachers and Students

Designed to help students reach their full potential, Brightspace supports the daily work of teachers in program planning, lesson delivery, assessment and communication.

Let's take a look at some of the tools that help teachers create exceptional learning experiences for their students.



Assessment		Communication		Student Engagement	
Assess various activity types, including electronic, paper and observational assessments in the class, and provide rich, meaningful feedback to students.		Facilitate active communication between students and teachers while sharing information with parents, guardians and families.		Amplify the student voice and build online class communities through interactive learning experiences.	
TEACHER VALUE	STUDENT VALUE	TEACHER VALUE	STUDENT VALUE	TEACHER VALUE	STUDENT VALUE
 <p><b>Assignments and Quizzes</b></p> <ul style="list-style-type: none"> <li>Provide, collect and assess a variety of formative and summative tasks.</li> <li>Streamline the grading process by creating rubrics and attaching them to assessments.</li> <li>Use the Quiz tool to check for understanding, consolidation or reinforcement. Auto-grading, randomization and attempt options help meet individual learner needs.</li> </ul>	<ul style="list-style-type: none"> <li>Receive timely and meaningful feedback in formats such as text, video and audio.</li> <li>Reinforce and consolidate learning through multiple quiz attempts and receive immediate feedback through the auto-grading functionality.</li> </ul>	 <p><b>Announcements and Activity Feed</b></p> <ul style="list-style-type: none"> <li>Easily post written, audio or video messages to connect with students right on the homepage.</li> <li>Link to materials and interact with students through the Activity Feed.</li> </ul>	<ul style="list-style-type: none"> <li>Access all important announcements and class information in one location.</li> <li>Personalize notification preferences for important updates across the course.</li> </ul>	 <p><b>Portfolio</b></p> <ul style="list-style-type: none"> <li>Review, assess and provide feedback on artifacts.</li> <li>Share student artifacts and feedback with parents, guardians and families with one click.</li> </ul>	<ul style="list-style-type: none"> <li>Share progress, reflections and learning experiences.</li> <li>Upload photo and video artifacts on the go from a phone or tablet with the mobile app.</li> </ul>
 <p><b>Grades and Mastery View</b></p> <ul style="list-style-type: none"> <li>View learners' overall levels of achievement related to each standard being taught in the course.</li> <li>Share specific grade items or overall grades with students.</li> </ul>	<ul style="list-style-type: none"> <li>Access current grades and specific assignment feedback.</li> <li>Showcase grades in Brightspace Parent &amp; Guardian to foster communication at home.</li> </ul>	 <p><b>Brightspace Parent &amp; Guardian</b></p> <ul style="list-style-type: none"> <li>Engage parents, guardians and families by providing a window into the classroom.</li> <li>Easily share the Activity Feed, Portfolio items, Work To Do and Grades.</li> <li>Automate weekly activity summaries to reduce repetitive manual communications.</li> </ul>	<ul style="list-style-type: none"> <li>Invite parents, guardians and families to connect to the classroom and gain insight into what's happening on the go.</li> <li>Equip users with the information they need to best support their children.</li> </ul>	 <p><b>Discussions</b></p> <ul style="list-style-type: none"> <li>Encourage teacher-to-student or student-to-student conversation.</li> <li>Create forums about class materials (or just for fun!) while monitoring student interactions.</li> </ul>	<ul style="list-style-type: none"> <li>Share ideas about course topics with peers.</li> <li>Ask questions, discuss assignments and work together in groups.</li> </ul>