

Evaluation and Feedback

Using the Class Progress Tool

September 1, 2022

Welcome
from D2L!



April Tanner
VLE Consultant

Agenda

1

Introduction

2

Live Demo

3

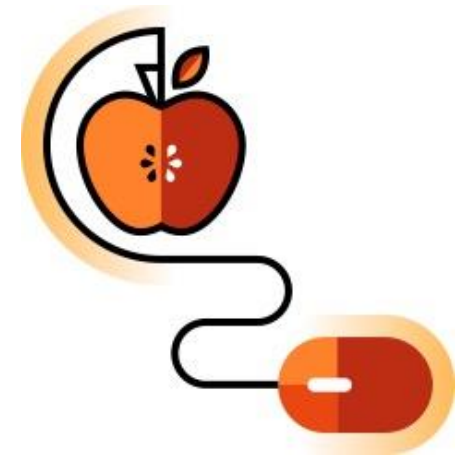
Future Sessions

4

Resources

Why use the Class Progress tool?

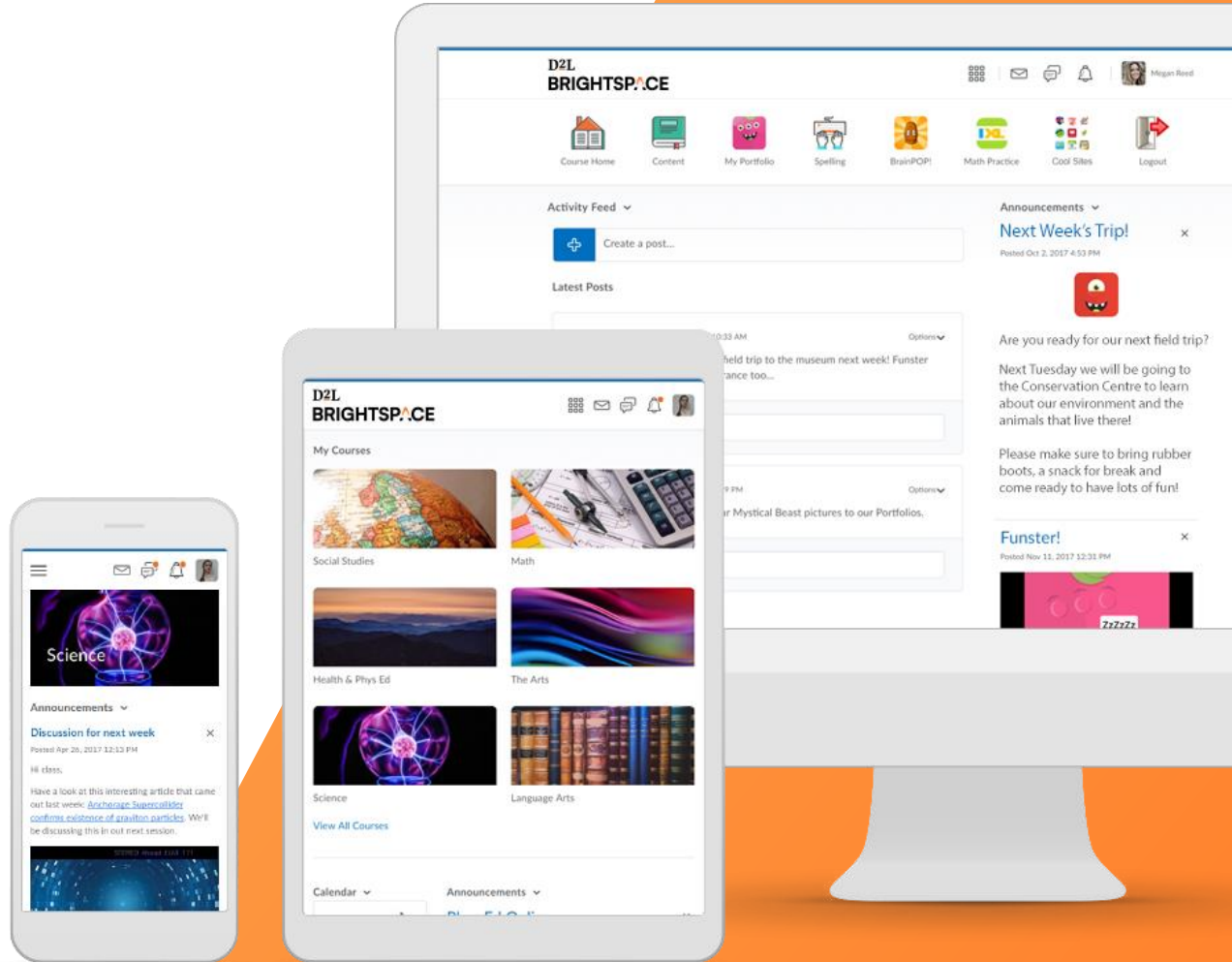
- Gain insight into how your class is progressing cumulatively
- Track individual student progress through a variety of indicators
 - Activities (Discussions, Content, Assignments, Quizzes, Checklist, Surveys)
 - Grades
 - Expectations
 - Login History



Live Demo

In this demo, you will learn how to:

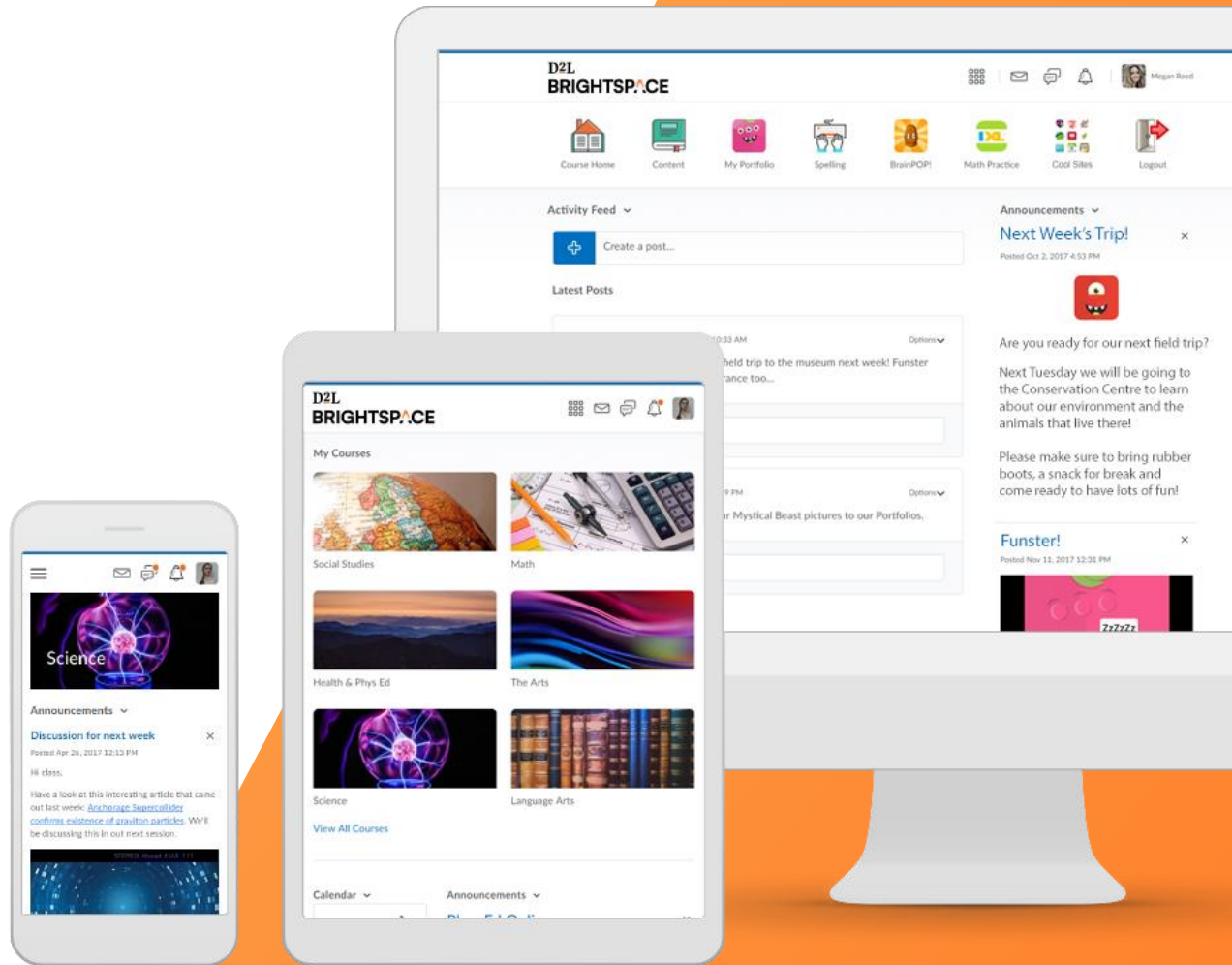
- Find and navigate the Class Progress tool
- How to drill down within the tool to find specific data
- View feedback and submissions for assessments



Live Demo

In this demo, you learned how to:

- ✓ Find and navigate the Class Progress tool
- ✓ How to drill down within the tool to find specific data



Back-to-School Micro-Learning Sessions

		August 30th Setting up your Classroom	August 31st Assessment	September 1st Evaluation and Feedback
Morning	10:00 – 10:20am	Personalizing your Homepage	Portfolio to Document Learning	Class Progress
	10:30 – 10:50am	Communicating with Students	Creating Assignments 101	Setting Up your Gradebook
	11:00 – 11:20am	Creating Custom Widgets	Multimedia Rubrics	Using Mastery View to Assess Expectations
Afternoon	1:00 – 1:20pm	Creating Multimedia Lessons	Differentiated Discussions	Quick Eval
	1:30 – 1:50pm	Creating Custom Content	New Quiz Experience	Sending Automated Reminders
	2:00 – 2:30pm	Brightspace Parents and Guardians	Office Hours	Office Hours

Additional Resources

Class Progress Resources

- [Track course progress with the Class Progress tool](#)
- [Class Progress - Understand and Modify Class Progress – Instructor](#)

General Resources

- [Ontario's VLE page](#)
- [One-minute workflows](#)
- [K12 Educators Getting Started](#)
- [Ontario End-User Support](#)

Thank you!

If you have questions about today's presentation...

- [Register](#) and join us for Office Hours Wednesday and Thursday at 2pm
- [Contact your TELT](#)
- Email us at k12ont@d2l.com