



Professional
Learning

Setting up Your Classroom

Brightspace Parents & Guardians

August 30, 2022

Welcome
from D2L!



April Tanner

VLE Consultant

Agenda

1

Introduction

2

Live Demo

3

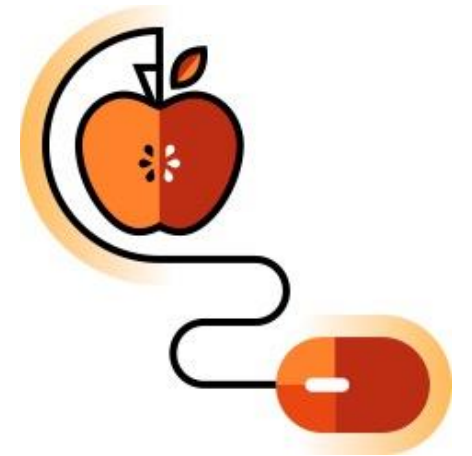
Future Sessions

4

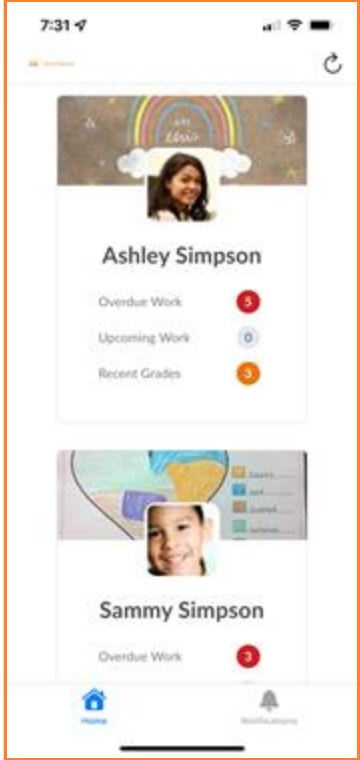
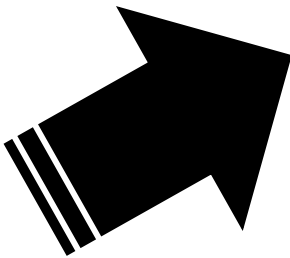
Resources

Why Brightspace Parents & Guardians?

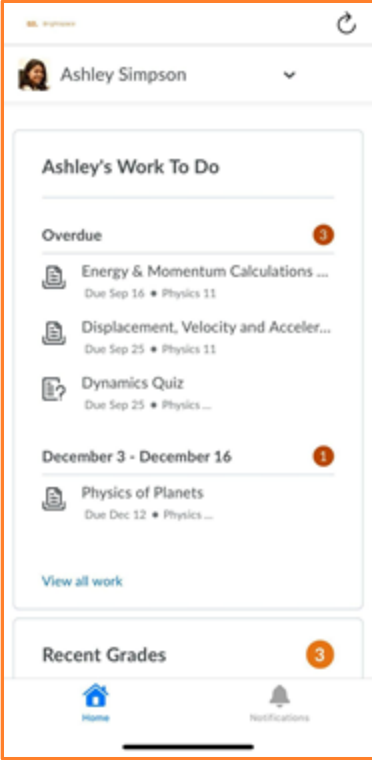
- Share school and board news and events
- Support parent insight into learning
- Connect to other parent tools and information.
- Provide a window into the classroom to extend learning
- Safe, secure, and SIS-integrated



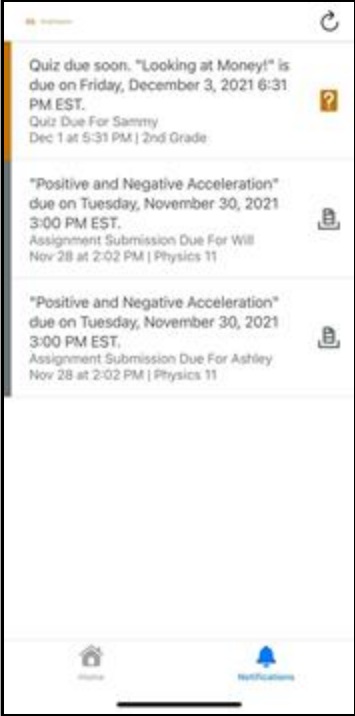
Brightspace Parent & Guardian App



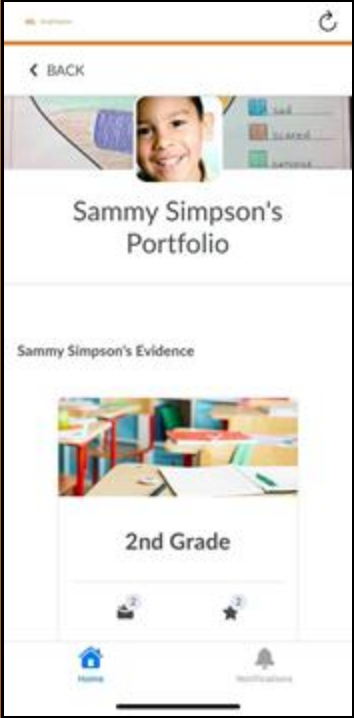
Landing Screen



Home Screen



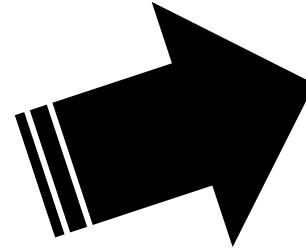
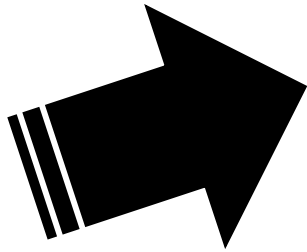
Notifications Screen



Portfolio



Brightspace Parent & Guardian Web Experience



D2L Brightspace

Welcome Joseph!

We'd like to send you a weekly summary of your child's activity every Saturday.

Email Address

By proceeding, you are giving us permission to send you messages.

[Confirm Email Address](#) [No Thanks](#)

Receive Weekly Summaries

D2L

D2L Brightspace

Hi Patty! Engage in your child's learning journey. Start by selecting a child.

Child	Overdue Work	Upcoming Work	Recent Grades
 Will Simpson	4	0	0
 Ashley Simpson	5	0	0
 Sammy Simpson	3	1	0

Home Screen

D2L Brightspace

Will Simpson

Category	Item	Percentage
Overdue	Energy & Momentum Calculations	0%
	Deflecting light beams	0%
	Dynamics Quiz	0%
	Physics of Planets	0%
Recent Grades	Velocity and Acceleration	90%
	Positive and Negative Acceleration	50%
	Kinetics Worksheet	42%
	Energy and Matter Discussion	20%
Portfolio Items	Image of a chair	Collected 12/14/2020 7:35 PM

Latest Posts

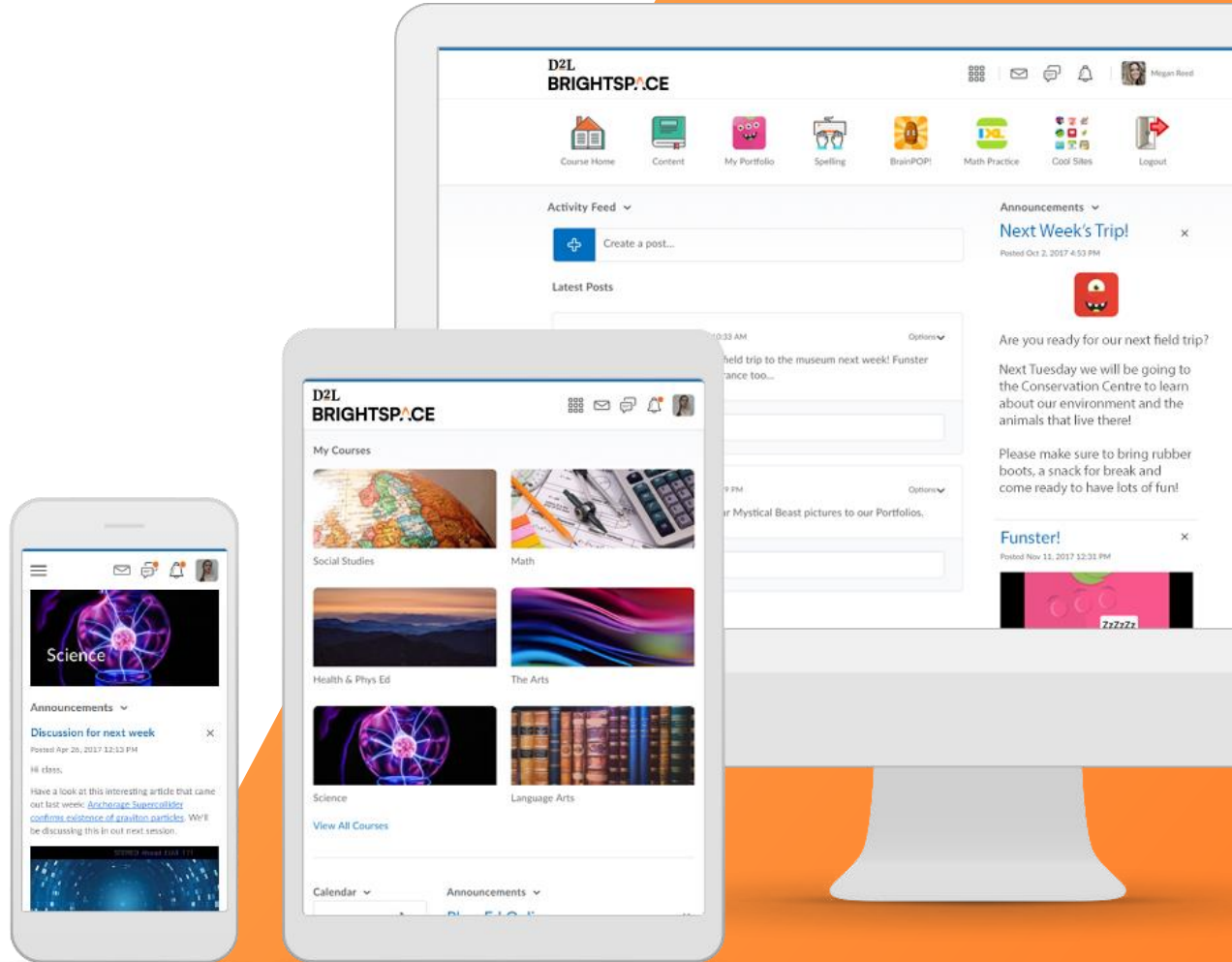
Tammy Unlabeled posted to Physics 11
Message • Feb 3, 2021 11:57 AM
Hi everyone, don't forget about the Momentum quiz due Monday!

Individual Student Profile

Live Demo

In this demo, you will learn:

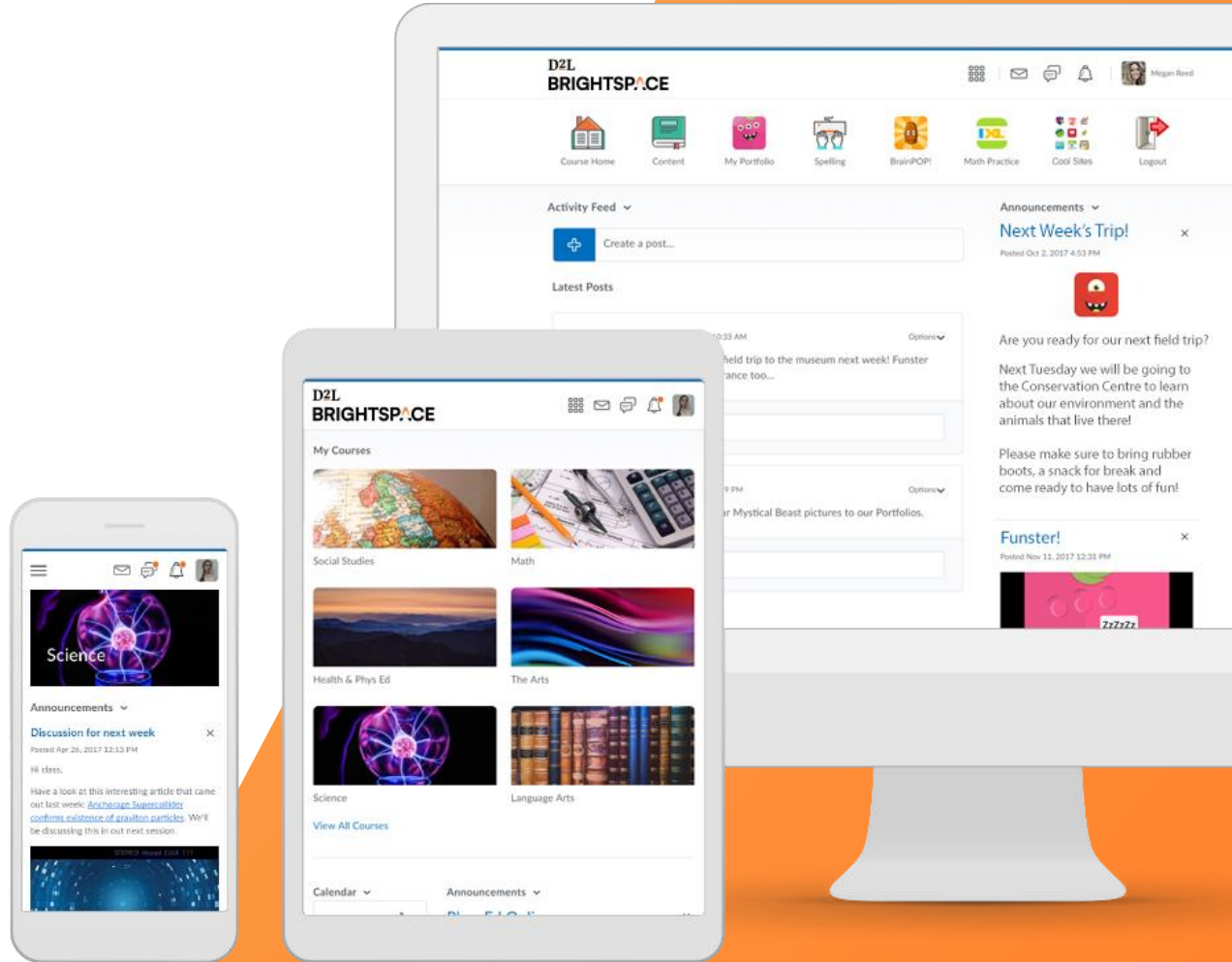
- Which tools feed into BP&G
 - Work to Do
 - Portfolio
 - Activity Feed
 - Grades
- What the platform looks like from the parent view (web and app)



Live Demo

In this demo, you learned how to:

- ✓ Which tools feed into BP&G
 - ✓ Work to Do
 - ✓ Portfolio
 - ✓ Activity Feed
 - ✓ Grades
- ✓ What the platform looks like from the parent view (web and app)



Back-to-School Micro-Learning Sessions

		August 30th Setting up your Classroom	August 31st Assessment	September 1st Evaluation and Feedback
Morning	10:00 – 10:20am	Personalizing your Homepage	Portfolio to Document Learning	Class Progress
	10:30 – 10:50am	Communicating with Students	Creating Assignments 101	Setting Up your Gradebook
	11:00 – 11:20am	Creating Custom Widgets	Multimedia Rubrics	Using Mastery View to Assess Expectations
Afternoon	1:00 – 1:20pm	Creating Multimedia Lessons	Differentiated Discussions	Quick Eval
	1:30 – 1:50pm	Creating Custom Content	New Quiz Experience	Sending Automated Reminders
	2:00 – 2:30pm	Brightspace Parents and Guardians	Office Hours	Office Hours

Additional Resources

Brightspace for Parent & Guardian Resources

- [Brightspace Parent & Guardian](#)
- [BP&G User Guide](#)
- [BP&G YouTube](#)
- [Understanding Brightspace Parent & Guardian: For Principals](#)

General Resources

- [Ontario's VLE page](#)
- [One-minute workflows](#)
- [K12 Educators Getting Started](#)
- [Ontario End-User Support](#)

Thank you!

If you have questions about today's presentation...

- [Register](#) and join us for Office Hours Wednesday and Thursday at 2pm
- [Contact your TELT](#)
- Email us at k12ont@d2l.com