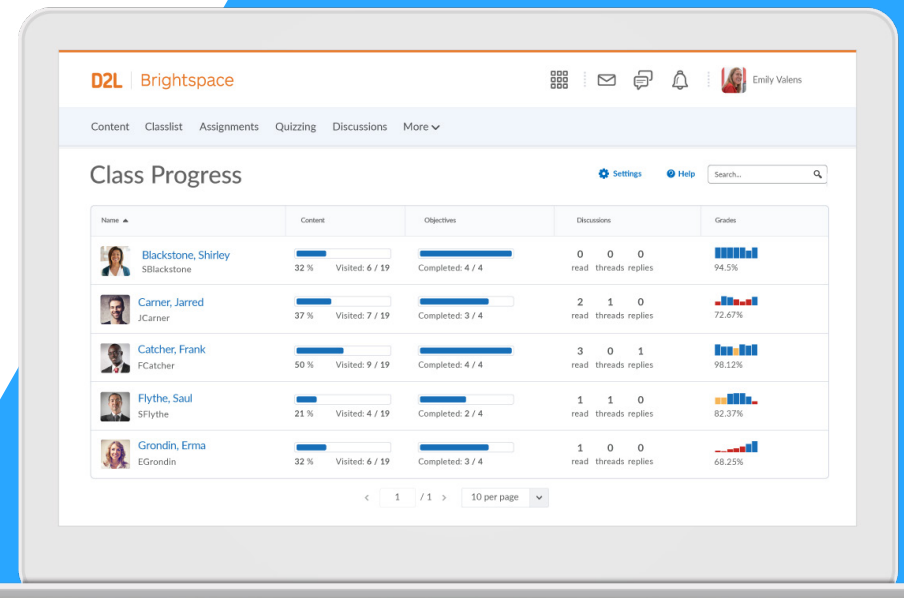
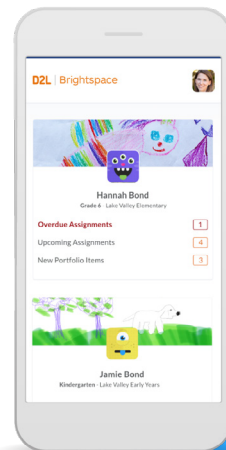


Nothing is more important than the security and privacy of your data

Ontario's Virtual Learning Environment (VLE) is powered by D2L's Brightspace platform.

At D2L, we take security and privacy very seriously. Our approach puts our clients' security and data confidentiality, availability, and integrity first. Our process works, as is demonstrated by our track record of delivering reliable security to all our clients, and it's continuously being improved.





LMS Security in the Brightspace Platform

Access and Authentication

The Brightspace platform supports Single Sign-On (SSO) and integration with various authentication solutions, including Active Directory, LDAP, Kerberos, and CAS.

Secure Transmission

Client connection to the Brightspace platform is via TLS cryptographic protocols with RSA encryption, so client data is transferred securely.

Application Security

Code for the Brightspace application is developed and tested following principles set out in the Open Web Application Security Project (OWASP) Top Ten framework to help ensure the Brightspace platform is secure.

Backup and Recovery

System and client data are backed up on a regular basis using asynchronous encrypted data transfer to off-site storage to ensure that client services can be restored in the event of a disaster.



Environment Security

Good security starts with a strong foundation. D2L partners with Amazon Web Services (AWS) to provide a highly secure, durable, and available infrastructure for deploying our Brightspace platform. AWS is a global world leader in delivering Infrastructure as a Service (IaaS) solutions and, like D2L, demonstrates its compliance through a myriad of security and compliance certifications.

aws.amazon.com/compliance/



Security Monitoring

D2L uses an industry-leading Security Information and Event Management (SIEM) solution to collect, aggregate, and correlate millions of system events a day across D2L's infrastructure to provide monitoring teams with real-time insight into potential security events.



Certifications

We take our responsibility to protect the confidentiality, availability, and integrity of your data seriously, which is why we have ISO 27001:2013 Certification and SOC 2 Compliance. D2L has its own Security Management System of policies, procedures, and controls based on the ISO 27001 control framework, following ISO 27002 control best practices where applicable. This ensures that the full service offering is compliant, not just the aspects governed by our hosting facilities.

ISO® 27001 is a security management standard that specifies security management best practices and comprehensive security controls following the ISO 27002 best practice guidance. This is a widely recognized international security standard. Certification in the standard requires us to:

- Systematically evaluate our information security risks, taking into account the impact of company threats and vulnerabilities.
- Design and implement a comprehensive suite of information security controls and other forms of risk management to address company and architecture security risks.
- Adopt an overarching management process to ensure that the information security controls meet our information security needs on an ongoing basis.

Further to this, our ISO 27018 certification confirms we have established commonly accepted control objectives, controls, and guidelines for implementing measures to protect Personally Identifiable Information (PII) in accordance with the privacy principles in ISO/IEC 29100 for the public cloud computing environment. We are one of the few LMS providers in the industry to hold this certification.

SOC 1/2®Type 2 is an auditing framework that evaluates the design and effectiveness of an organization's operational controls. These operational controls are procedures that:

- Describe how we manage the people, processes, and technology that help us deliver world-class services to our clients.
- Consider practices such as how we manage access to our IT environments, how we deploy code into production, how we onboard new employees, and just about anything that could affect our ability to maintain the security, privacy, availability, and performance of our customer offerings.

For more information visit [D2L.com/security](https://www.d2l.com/security).



Privacy

D2L will store Ministry and school board data as noted below or as may otherwise be agreed to between D2L and the Ministry. Where D2L uses a Ministry-approved third party to store Ministry data, D2L will remain fully responsible for such third party as between D2L and the Ministry. D2L will incorporate—or contain provisions materially similar, but in no event less restrictive, to—the relevant portions of the resulting agreement into its third-party agreements. The majority of your information will be hosted in Canada. When services in Canada are not available, we may leverage services in the U.S.

For transparency, nearly all Brightspace components are hosted in Canada. Components currently hosted in Canada include Brightspace Learning Environment, ePortfolio, Learning Repository, Capture™, and Insights™. Related hosting services such as replication to a secondary site (i.e., the failover site), backups, and storage are also all currently located in Canada for these components. Additionally, the Ministry-owned applications that D2L hosts are hosted in Canada.

Two sub-components of Brightspace are currently hosted in the United States. These services are deployed in U.S. data centers that have the same operational and security controls and compliance as our Canadian data centers. For transparency, the following summarizes the Brightspace components hosted in the U.S.:

- **Video Note™** lets users create short recordings from their webcam anywhere the Insert Stuff or Video Attachments are supported in Brightspace.
- **Bongo Virtual Classrooms** are included with Brightspace and empowers teachers and students to connect in a highly collaborative, real-time, videoconferencing communication environment. The data for this feature is stored in Canada but includes some U.S.-based processing.



About D2L

D2L is the software leader that makes learning experiences better. The company's cloud-based platform is easy to use, flexible, and smart. With Brightspace, organizations can personalize the experience for every learner to deliver real results. The company is a world leader in learning analytics: Its platform predicts learner performance so that organizations can take action in real time to keep learners on track. Brightspace is used by learners in higher education, schools, and the enterprise sector, including the Fortune 1000. D2L has operations in the United States, Canada, Europe, Australia, Brazil, and Singapore.

Contact Us

Phone: 1-519-772-0325 (Worldwide)
Toll-Free: 1-888-772-0325 (North America)
+44-203-695-8580 (United Kingdom and Europe)
0-800-452-069 (New Zealand)
1-800-778-631 (Australia)
0-800-891-4507 (Brazil)

Fax: 1-519-772-0324
Email: Sales@D2L.com
Facebook: facebook.com/D2LInc
Twitter: [@D2L](https://twitter.com/D2L)
Web: D2L.com